

MONTHLY MEMBERSHIP PROGRESS REPORT

LOCATION TEXAS

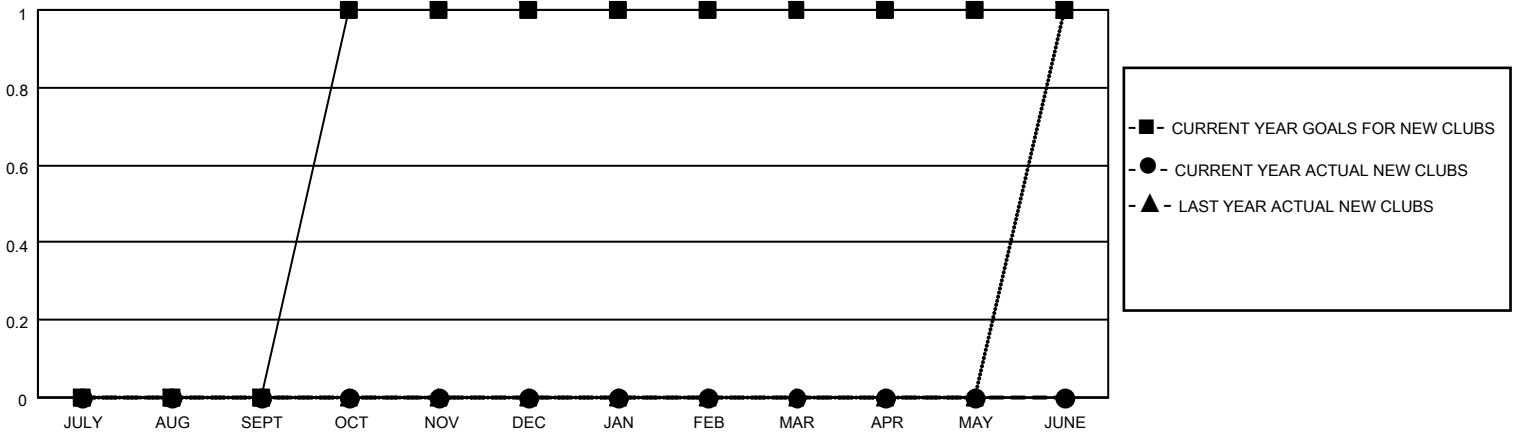
District 2 T3

Results as of: 2/28/2022

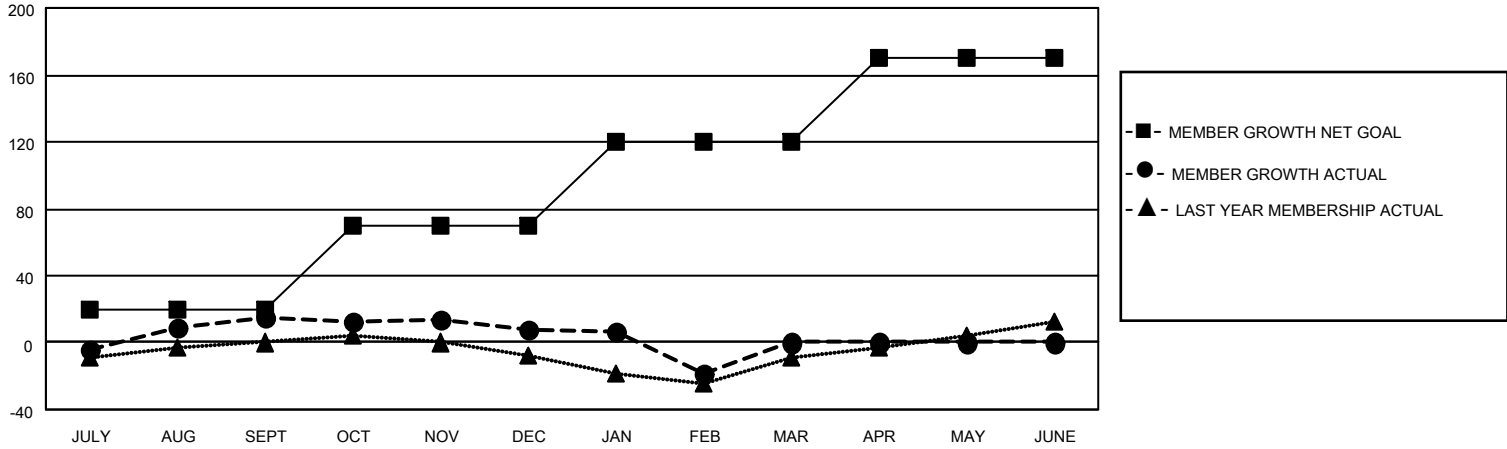
Clubs			
RESULTS FOR 2021-2022			
QUARTER	NEW CLUB GOAL	NEW CLUBS	DROPPED CLUBS
JULY/AUG/SEPT	0	0	0
OCT/NOV/DEC	1	0	0
JAN/FEB/MAR	0	0	1
APR/MAY/JUNE	0	0	0

Members			
RESULTS FOR 2021-2022			
QUARTER	MEMBER GROWTH NET GOAL	MEMBER GROWTH ACTUAL	DROPPED MEMBERS ACTUAL (including transfers)
JULY/AUG/SEPT	20	46	27
OCT/NOV/DEC	50	27	33
JAN/FEB/MAR	50	10	36
APR/MAY/JUNE	50	0	0

GOALS AND ACTUAL NEW CLUBS CUMULATIVE



GOALS AND ACTUAL MEMBERS CUMULATIVE



DROPPED CLUBS: 1

14 CLUBS OF 34 ADDED 1 OR MORE NEW MEMBERS

GENDER DISTRIBUTION

MALE	360 (51.80%)
FEMALE	335 (48.20%)
NON BINARY	0 (0.00%)
PREFER NOT TO ANSWER	0 (0.00%)

DROPPED MEMBERS

[CLICK HERE FOR CUMULATIVE MEMBERSHIP DATA](#)

DECEASED	9
CLUB CANCELLED	12
OTHER	75
TOTAL	96

TOTAL FAMILY UNIT MEMBERS	81
FAMILY MEMBERS PAYING HALF DUES	41